



*Comprehensive Land Use Plan, Mina, Iloilo*  
*2016-2025*



**VOLUME 3**

# **SECTORAL STUDIES**



# Comprehensive Land Use Plan, Mina, Iloilo 2016-2025



## Contents

<i>List of Tables</i>	<i>vi</i>
<i>List of Figures</i>	<i>x</i>
<i>List of Maps</i>	<i>xi</i>
<i>List of Acronyms and Abbreviations</i>	<i>xii</i>
<b>1 Demography.....</b>	<b>1</b>
1.1 Population Levels and Growth Pattern .....	2
1.2 Population Composition.....	3
-Population by School Age, Working Age, Dependent Age .....	3
1.3 Population Distribution .....	4
-Population by Age-group and Sex.....	4
-Urbanization Level .....	5
-Population Density.....	5
1.4 Population Change .....	7
-Overseas Workers .....	7
-Projected Population and Households .....	7
-Household Population and Average Household Size.....	8
-Projected Population by Barangay.....	8
-Projected School-Age, Labor Force and Dependent Population .....	10
-Projected Population by Age-Group .....	10
1.5 Other Population Descriptions.....	11
-Population by Educational Attainment.....	11
-Population by Mother Tongue.....	12
-Population by Religious Affiliation.....	13
-Population by Marital Status in Age-group.....	14
1.6 Core Health Indicators .....	16
-Crude Birth and Death Rates .....	16
-Literacy Rate.....	16
-Labor Force by Sex and Employment Status.....	17



# Comprehensive Land Use Plan, Mina, Iloilo 2016-2025



<b>2</b>	<b>Physical Environment .....</b>	<b>18</b>
2.1	Terrestrial Environment .....	19
	-Topography.....	19
	-Soils.....	21
	-Surface Run-Off.....	21
	-Forests .....	21
2.2	Water Environment.....	23
	- Freshwater Resources.....	23
2.3	Atmosphere and Climate .....	23
	- Prevailing Winds .....	23
	- Temperature .....	23
	- Rainfall .....	23
<b>3</b>	<b>Social Sector .....</b>	<b>24</b>
3.1	Education.....	25
	- Elementary Education .....	25
	- Secondary Education .....	31
	- Technical/ Vocational Education .....	33
	- Special Education (SPED) and Alternative Learning System (ALS).....	35
	- Education Analysis Matrix.....	36
3.2	Housing and Settlements .....	38
	- Existing Housing Situation and Backlog .....	38
	- House and Land Tenure Status and Ownership .....	40
	- Housing Facilities and Utilities.....	41
	- Informal Settlements and Danger Zones.....	42
	- Current and Future Housing Need.....	44
	- Housing and Settlements Analysis Matrix .....	44
3.3	Health Facilities, Nutrition and Sanitation .....	45
	- Solid Waste Management .....	51
	- Disposed Waste Characteristics.....	52
	- Waste Characteristics .....	52
	- Recent SWM Initiatives.....	53



# Comprehensive Land Use Plan, Mina, Iloilo 2016-2025



- Institutional Regime.....	54
-Solid Waste Management Plan Implementation/ Program/ Activities.....	55
-Clean Air Quality .....	55
-Health and Sanitation Analysis Matrix .....	56
3.4 Social Welfare Services .....	58
- Social Welfare Services Analysis Matrix.....	63
3.5 Sports and Recreation .....	65
- Sports and Recreation Analysis Matrix .....	66
3.6 Protective Services .....	68
- Mina Municipal Police Station .....	68
- Mina Municipal Fire Station.....	72
- Protective Services Analysis Matrix .....	74
<b>4 Economic Sector .....</b>	<b>76</b>
4.1 Sectors of the Local Economy .....	77
- Agriculture Sector .....	77
- Agriculture Analysis Matrix.....	88
- Industry Sector.....	89
- Industry Sector Analysis Matrix .....	89
- Commerce and Trade .....	90
- Scalogram Analysis.....	97
- Centrality Index.....	98
- Location Quotient (LQ) .....	102
- Commerce and Trade Analysis Matrix.....	103
- Tourism .....	104
- Economic Issues and Concerns .....	106
<b>5 Infrastructure and Utilities.....</b>	<b>108</b>
5.1 Transportation.....	109
- Road Network .....	109
- External accessibility and Internal Circulation.....	111
- Public Transport Inventory .....	111
- Transport Terminals.....	112



# Comprehensive Land Use Plan, Mina, Iloilo 2016-2025



- Traffic Conditions.....	112
- Road Safety .....	112
- Transportation Sector Analysis Matrix .....	113
5.2 Power Sector .....	115
- Power Sector Analysis Matrix .....	117
5.3 Water Sector .....	117
- Water Sector Analysis Matrix.....	121
5.4 Communications .....	123
- Communications Sector Analysis Matrix .....	123
- Infrastructure and Utilities Issues and Concerns .....	124
- Infrastructure and Utilities Analysis Matrix .....	125
- Emerging Issues and Concerns .....	127
<b>6 Special Study Area .....</b>	<b>128</b>
6.1 Disaster Risk Reduction Management .....	129
- Preparedness Issues .....	129
- Prevention and Mitigation Issues .....	129
- Response Issues .....	129
6.2 Climatological Hazards .....	130
- Flood and Flashfloods .....	130
- Typhoon .....	134
- Rain-Induced Landslides .....	135
- Drought Hazard.....	137
- Climate Change Induced Hazards .....	137
Increasing Temperatures .....	137
Increase in Rainfall Intensity .....	139
Extreme Events .....	143
6.3 Geo-Physical Hazards .....	143
- Ground Shaking due to Earthquake .....	143
- Liquefaction due to Earthquake.....	144
6.4 Hazard Impacts.....	145
6.5 Risk Assessment .....	148



# Comprehensive Land Use Plan, Mina, Iloilo 2016-2025



-Threat Rating Scale .....	148
-Vulnerability Indicators.....	148
-Summary of Hazard Ratings of All Barangays.....	149
-Findings from the Risk Assessment .....	152
- Disaster Risk Reduction and Management Analysis Matrix.....	161

## List of Tables

Table 1. 1. Historical Growth of Population, Mina, Iloilo .....	2
Table 1. 2. Population by School-Age, Working Age, Dependent Age Group and Sex, Year 2010.....	3
Table 1. 3. Population Distribution by Age-Group and Sex, Year 2010 .....	4
Table 1. 4. Urbanization Levels for the Past 40 Years.....	5
Table 1. 5. Population Density, Mina, Iloilo .....	6
Table 1. 6. Overseas Workers For the Past Five Years.....	7
Table 1.7. Projected Population and Households, Year 2016-2025 .....	7
Table 1.8. Household Population by Urban and Rural Barangay and Average Household Size, Year 2010 .....	8
Table 1.9. Population Projection by Barangay, Year 2016-2025 .....	9
Table 1.10. Projected School-Age Population, Labor Force and Dependent Population.....	10
Table 1.11. Projected Total Population by Age Group .....	11
Table 1.12. Household Population 5 Years Old and Over by Highest Educational Attainment .....	12
Table 1.13. Population by Mother Tongue, Year 2010.....	13
Table 1.14. Population by Religious Affiliation, Year 2010.....	14
Table 1.15. Marital Status by Age Group.....	15
Table 1.16. Crude Birth Rate (CBR) and Crude Death Rate (CDR) for the Past Five Years (2011-2015).....	16
Table 1.17. Literacy Rate of Population 5 Years old and Over by sex, Year 2010 .....	16
Table 1.18. Labor Force Population by Sex and Employment Status, Year 2011 .....	17
Table 2. 1. Land Area Distribution of Different Slope Classes in Mina, Iloilo .....	19
Table 2. 2. Land Area Distribution of Different Soil Types in Mina, Iloilo .....	21



# Comprehensive Land Use Plan, Mina, Iloilo 2016-2025



Table 3.1.1. Schools by Level, Type, Facilities and Condition SY 2015-2016, Mina, Iloilo.....	25
Table 3.1.2. Student-Teacher and Student-Classroom Ratio by Level, SY 2015-2016, Mina, Iloilo .....	26
Table 3.1.3. Historical Drop-out, Completion, Survival, Graduation and Participation Rates in Elementary Level for the Last Five School Years .....	27
Table 3.1.4. Projected Classroom, Teacher Requirements in Public Schools by Level, Year 2016-2025 .....	28
Table 3.1.5. Historical Enrolment by Level for the Last Three Years .....	30
Table 3.1.6. Student-Teacher and Student-Classroom Ratio by Level, SY 2015-2016, Mina, Iloilo .....	31
Table 3.1.7. Projected Classroom, Teacher Requirements in Public Schools by Level, Year 2016-2025 .....	31
Table 3.1.8. Historical Enrolment by Level for the Last Three Years .....	32
Table 3.1.9. Historical Drop-out, Completion, Survival, Graduation and Participation Rates in Elementary Level for the Last Five School Years .....	32
Table 3.1.10. Vocational/Technical School, 2015, Mina, Iloilo.....	33
Table 3.1.11. Historical Enrolment by Level for the Last Five Years.....	34
Table 3.1.12. Historical Enrolment of Computer Literacy Training .....	34
Table 3.1.13. Report of Enrolment of Sped Class, SY 2012-2013 .....	35
Table 3.1.14 Alternative Learning System Summary of 2016 Statistical Data .....	35
Table 3.2.1. Housing Situation for the Last Three Censual Years, Mina, Iloilo, 2000,2007 and 2010.....	39
Table 3.2.2. Housing Backlog, 2007 and 2010 .....	39
Table 3.2.3. Inventory of Residential Subdivisions, Municipality of Mina, Iloilo.....	40
Table 3.2.4. Housing Facilities and Utilities Situation, Municipality of Mina, Iloilo, 2010 .....	42
Table 3.2.5. Inventory of Informal settlers, Municipality of Mina, Iloilo.....	43
Table 3.2.6. Current and projected Housing Need .....	44
Table 3.3.1. General Health Situation for the Past Five Years.....	46
Table 3.3.2. Medical Health Facilities and Personnel, Mina, Iloilo, 2015.....	46
Table 3.3.3. Ten Leading Causes of Morbidity in the Past Five Years.....	47
Table 3.3.4. Ten Leading Causes of Mortality in the Past Five Years .....	48
Table 3.3.5. Malnourished Children for the Past Five Years.....	49
Table 3.3.6. Cemeteries and Moemorial Parks, 2015.....	49
Table 3.3.7. Number of Households in Occupied Housing Units by Type of Toilet Facilities, Year 2015.....	50
Table 3.3.8. Municipal Waste Characteristics, Mina, Iloilo .....	51
Table 3.3.9. Solid Waste Generation by Source, Year 2012 .....	51
Table 3.3.10. Methods of Solid Waste Disposal/ Treatment, Year 2015 .....	52
Table 3.4.1. Presence of Social welfare Facilities and Services Offered, Year 2015.....	59



# Comprehensive Land Use Plan, Mina, Iloilo 2016-2025



Table 3.4.2. Historical Number of Population Served by Type of Clientele System.....	60
Table 3.4.3. Social Welfare Related Projects, Approved Funded for Implementation .....	61
Table 3.5.1. Sports and Recreation Facilities by Barangay, Mina, Iloilo .....	65
Table 3.5.2. Proposed Recreation Facility and Hazard Susceptibility, Mina, Iloilo.....	66
Table 3.6.1. Mina Municipal Police Station Facilities and Equipment, Mina, Iloilo, 2015.....	68
Table 3.6.2. Barangay Tanod by Type of Services, Mina, Iloilo, 2015 .....	68
Table 3.6.3. Crime Incidence for Adult for the Past Five Years .....	70
Table 3.6.4. Crime Incidence for Children (below 10 years old) in conflict with the Law for the Past Five Years.....	71
Table 3.6.5. Current and Projected Requirement for Police and Jail Personnel .....	72
Table 3.6.6. Mina Municipal Fire Station by Facilities and Equipment, Mina, Iloilo, 2015 .....	72
Table 3.6.7. Fire Incidence for the Last Five Years.....	73
Table 3.6.8. Current and projected Requirement for Fire Personnel.....	74
Table 4.1.1. Area Planted to Irrigated Rice and Production, Mina, Iloilo, 2014 .....	78
Table 4.1.2. Area Planted to Rain-fed Rice and Production, Mina, Iloilo, 2014 .....	79
Table 4.1.3. Comparative Agricultural Crop Areas and Production, Year 2014 and 2015 .....	80
Table 4.1.4. Livestock and Poultry Population, Mina, Iloilo, 2014 .....	80
Table 4.1.5. Number of Households by Animal Raised, Mina, Iloilo, 2011 .....	81
Table 4.1.6. Number of Households by Farm Ownership Status, Mina, Iloilo, 2011 .....	83
Table 4.1.7. Ownership of Farm Machineries and Equipment, Mina, Iloilo, 2011.....	84
Table 4.1.8. Support to Agriculture, Mina, Iloilo 2015 .....	84
Table 4.1.10. CARP Implementation Status in the Municipality of Mina, 2015 .....	85
Table 4.1.11. Area and Location of Production Forests, Mina, Iloilo .....	86
Table 4.1.12. Inventory of Existing Industrial Establishment, 2015 .....	89
Table 4.1.13. Inventory of Commercial Areas, 2014 .....	90
Table 4.1.14. List of Business Permits Issued by Type, 2011-2015.....	91
Table 4.1.15. Inventory of Commercial Establishments.....	93
Table 4.1.16. Number of Establishments in the Commerce and Trade Sector, Mina, Iloilo, 2014 .....	93
Table 4.1.17 Number of Business establishments by Barangay, Mina, Iloilo, 2014.....	94
Table 4.1.18. Number of Establishments by Sub-sector, Mina, Iloilo, 2014 .....	96
Table 4.1.19. Scalogram Based on Number of Establishments, Mina, Iloilo, 2014 .....	97
Table 4.1.20. Calculated Weights/ Location Coefficients of Urban Functions, Mina, Iloilo, 2014.....	99





# Comprehensive Land Use Plan, Mina, Iloilo 2016-2025



Table 4.1.21. Centrality Index and Heirarchy of Settlements, Mina, Iloilo, 2014 .....	100
Table 4.1.22. Location Quotient, Mina and Iloilo Province, 2011 .....	102
Table 4.1.23. Inventory of Tourism Establishments, Mina, Iloilo, 2015 .....	104
Table 4.1.24. Accessibility of Existing Tourism Establishment and Tourist Attractions, Mina, Iloilo, 2015 .....	105
Table 5.1.1. Inventory of Roads by System Classification and Type of Pavement, Mina, Iloilo .....	110
Table 5.1.2. Inventory of Bridges by Location, Type, capacity and Condition, Mina, Iloilo .....	110
Table 5.1.3. Inventory of Public Land Transport Vehicles by Type and Service Routes, Mina, Iloilo, 2015 .....	111
Table 5.1.4. Land Transportation Terminals by Location and Condition, Mina, Iloilo, 2015 .....	112
Table 5.1.5. Road Accidents by nature, Location, and Frequency for the past Three Years, Mina, Iloilo, 2010.....	113
Table 5.2.1. Distribution of ILECO II Services, 2015 .....	115
Table 5.2.2. Household Served by Electricity, 2011 .....	116
Table 5.3.1. Level I Water Supply System by Type and Number of Population Served, Mina, Iloilo, 2015 .....	118
Table 5.3.2. Level III Water Supply System by Type and Number of Population Served, Mina, Iloilo, 2015 .....	119
Table 5.3.3. Other Water Sources, Mina, Iloilo, 2015 .....	119
Table 5.3.4. Households by Source of Potable Water, Mina, Iloilo, 2011 .....	121
Table 5.3.5. Households by Distance from Source of Potable Water, Mina, Iloilo, 2011 .....	121
Table 5.4.1. List of Communication Facilities and Ownership, Mina, Iloilo, 2015.....	123
Table 6.2.1. Barangays Susceptible to flood, Mina, Iloilo .....	132
Table 6.2.2. Household and Population Affected by Flood Hazard, Year 2012.....	133
Table 6.2.3 Household and Population Affected by TyphoonHazard, Year 2013 .....	134
Table 6.2.4. Barangays Susceptible to Landslide caused by Heavy Rainfall, Mina, Iloilo .....	135
Table 6.2.5. Monthly Minimum and maximum Temperature Data for the Year 2011-2015.....	138
Table 6.2.6. Rainfall data for the Year 2011-2015 .....	141
Table 6.2.7. Frequency of Extreme Events in 2020 and 2050 under Medium-range Emission Scenario in Iloilo Province.....	143
Table 6.3.1. Barangays Susceptible to Liquefaction caused by Earthquake, Mina, Iloilo .....	144
Table 6.4.1. Summary of Hazards in Mina, Iloilo .....	145
Table 6.5.1. Threat Rating Scale.....	148
Table 6.5.2. Hazard Ratings for Each Barangay in Mina, Iloilo .....	150
Table 6.5.3. Risk ratings for Each Barangay in Mina, Iloilo .....	154



## List of Figures

Figure 1. 1. Historical Growth Population.....	2
Figure 1.2. Population by Age-group and Sex.....	4
Figure 3.1.1. Historical Enrolment of MSTC in the Past Five Years .....	34
Figure 3.2.1. Household Population, Number and average Household Size, Mina, Iloilo 1990-2010 .....	38
Figure 3.2.2. Mode of Financing for Housing Unit Purchase, Mina, Iloilo .....	40
Figure 3.2.3. Land Ownership by Household-Owners, Mina, Iloilo, 2010 .....	41
Figure 3.2.4. Temporary Resettlement site, Barangay Cabalabaguan .....	42
Figure 3.2.5. Informal Settlement along the Irrigation Canal, Barangay Tolarucan .....	42
Figure 3.2.6. Structures in the town center .....	42
Figure 3.3.1 Mina Health Operation Management Information System, Mina, Iloilo .....	45
Figure 3.3.2 Water Sources & Characteristics, Mina, Iloilo .....	53
Figure 3.4.1. Social Services transaction flow, Mina, Iloilo.....	58
Figure 4.1.1. Number of Households Raising Farm Animals, Mina, Iloilo, 2011 .....	82
Figure 4.1.2. Number of Animals Raised by Households, Mina, Iloilo, 2011.....	82
Figure 4.1.3. Number of Households by Farm Ownership Status, Mina, Iloilo, 2011 .....	83
Figure 4.1.4. MAIS Software-Data Flow Diagram .....	86
Figure 4.1.5. Municipal Agriculture Information System Diagram .....	87
Figure 4.8. Hierarchy of Settlements, Mina, Iloilo, 2014 .....	101
Figure 5.2.1. Sectoral Distribution of Power Consumption, Mina, Iloilo.....	116
Figure 5.3.1. Water Service Level distribution (% of HH), Mina, Iloilo .....	120
Figure 6.2.1. Seasonal Average Temperature in 2020 and 2050 under medium-range emission scenario in Iloilo province .....	138
Figure 6.2.2. Seasonal quarterly Rainfall total in 2020 and 2050 under medium-range emission scenario in Iloilo province.....	140



## **List of Maps**

Map 2. 1. Slope Map of Mina, Iloilo.....	20
Map 2. 2. Soil Map of Mina, Iloilo.....	22
Map 3.1 Facilities Map (Education)of Mina, Iloilo.....	37
Map 3.2 Facilities Map (Health Services)of Mina, Iloilo.....	57
Map 3.3 Facilities Map (Social Welfare Services)of Mina, Iloilo.....	64
Map 3.4 Facilities Map (Sports facilities)of Mina, Iloilo.....	67
Map 3.5 Facilities Map (Protective Services)of Mina, Iloilo.....	75
Map 5.1 Road Map of Mina, Iloilo.....	114
Map 5.2 Facilities Map (Water)of Mina, Iloilo.....	122
Map 6.1 Detailed landslide and Floor Hazrd Map of Mina.....	131
Map 6.2. Detailed landslide and Floor Hazrd Map of Mina.....	136
Map 6.3. Drought Hazard Map, Mina, Iloilo, 2015.....	142
Map 6.4. Ground Shaking Hazard Map of Mina, Iloilo.....	146
Map 6.5. Liquefaction Hazard Map of Mina, Iloilo.....	147
Map 6.6. Flood Risk Map of Mina, Iloilo.....	155
Map 6.7. Groundshaking Risk Index Map of Mina, Iloilo.....	156
Map 6.8. Liquefaction Risk Index Map of Mina, Iloilo.....	157
Map 6.9. Drought Risk Index Map of Mina, Iloilo.....	158
Map 6.10. Rain Induced Landslide Index Map of Mina, Iloilo.....	159
Map 6.11.Drought Risk Map of Mina, Iloilo.....	160



## List of Acronyms and Abbreviations

4P(s)	<i>Pantawid Pamilyang Pilipino Program</i>
A+EC	(Category) A+Extra Large Coop
ALAGA KA	<i>ALAmin at GAmitin and Serbisyong Pangkalusugan</i>
ALS	Alternative Learning System
ATI	Agricultural Training Institute
BAC	Bids and Awards Committee
BAWASA	Barangay Water and Sanitation Association
BFP	Bureau of Fire Protection
BHS	Barangay Health Station
BHW	Barangay Health Worker
BJMP	Bureau of Jail Management and Penology
BLGF	Bureau of Local Government Finance
BPLO	Business Permits and Licensing Office
BPMS	Business Permits Management System
Brgy(s).	Barangay(s)
C	Celsius
C	Condition
CARP	Comprehensive Agrarian Reform Program
CCT	Conditional Cash Transfer
CHED	Commission on Higher Education
CIDSS	Comprehensive and Integrated Delivery of Social Services
Clnc	Clinic
CLT(s)	Certificate(s) of Land Transfer
CLUP	Comprehensive Land Use Plan
CO	Capital Outlay
COMELEC	Commission on Elections
Comf.	Comfort



# Comprehensive Land Use Plan, Mina, Iloilo 2016-2025



CPH	Census of Population and Housing
CS	Central School
CSOs	Civil Society Organizations
CY	Calendar Year
DA	Department of Agriculture
DBP	Development Bank of the Philippines
dec	decrease
Dec.	December
DENR	Department of Environment and Natural Resources
DepEd	Department of Education
DH	Domestic Helper
DILG	Department of the Interior and Local Government
do	ditto
DOF	Department of Finance
DOH	Department of Health
DOLE	Department of Labor and Employment
DOST	Department of Science and Technology
DSWD	Department of Social Welfare and Development
DTI	Department of Trade and Industry
E-vat	Expanded Value Added Tax
ECAs	Environmentally Critical Areas
EcoZone	Economic Zone
Elem.	Elementary
ES	Elementary School
Est.	Estimated
etc.	<i>et cetera</i>
FIES	Family Income and Expenditure Survey
Gen.	General
GIS	Geographic Information System
Gov't	Government
GPPPI	Green Power Panay Philippines, Incorporated



# Comprehensive Land Use Plan, Mina, Iloilo 2016-2025



GPS	Global Positioning System
GSIS	Government Service Insurance System
GSO	General Service Office
ha/has(.)/Ha.	hectares
HH	Household(s)
HRMO	Human Resource Management Office
HU	Housing Units
i.e.	<i>id est</i>
ICIA-ED	Integrated Central Iloilo Alliance for Economic Development
IEC	Information, Education, and Communication
ILECO II	Iloilo Electric II Cooperative Incorporated
inc	increase
IRA	Internal Revenue Allotment
Jan.	January
JAO	Joint Administrative Order
K-12	Kindergarten to Grade 12
KBAS	Key Biodiversity Areas
Kg.	Kilogram(s)
km/kms(.)	kilometer(s)
KWH	Kilowatt Hour
Lab	Laboratory
LCAS	Local Conservation Areas
lcpd	liters per capita daily
LDC	Local Development Council
LFC	Local Finance Committee
LFPR	Labor Force Participation Rate
LGU	Local Government Unit
LHB	Local Health Board
Lib	Library
LQ	Location Quotient
LSP	Local Shelter Plan



# Comprehensive Land Use Plan, Mina, Iloilo 2016-2025



LTFRB	Land Transportation Franchising and Regulatory Board
LWUA	Local Water Utilities Administration
m	meter(s)
MAIS	Municipal Agriculture Information System
MAO	Municipal Agriculture Office
max.	maximum
MBO	Municipal Budget Office
Mce-C/MCEC	Mina Community e-Center
MCPD	Municipal Council for the Protection of Children
MCR	Municipal Civil Registrar
MCS	Mina Central School
MDC	Municipal Development Council
MDRRMO	Municipal Disaster Risk Reduction and Management Office
MEE	Municipal Economic Enterprise
MENRO	Municipal Environment and Natural Resources Office
MEO	Municipal Engineering Office
MHO	Municipal Health Office
MIWD	Metro Iloilo Water District
MLGOO	Municipal Local Government Operation Officer
MNC	Municipal Nutrition Council
MNHS	Mina National High School
mm	millimeter(s)
MO.	Month
MOOE	Maintenance and Other Operating Expenses
MPDC	Municipal Planning and Development Coordinator
MPDO	Municipal Planning and Development Office
MPDP(s)	Multi-purpose Drying Pavement(s)
MPOC	Municipal Peace and Order Council
MRF	Materials Recovery Facility
MSTC	Mina Skills Training Center
MSWD	Municipal Social Welfare and Development



# Comprehensive Land Use Plan, Mina, Iloilo 2016-2025



MSWDO	Municipal Social Welfare and Development Office
MSWMB	Municipal Solid Waste Management Board
MT	Metric Ton
MVA	Mega Volt Ampere
MW	Megawatt
N	Number
NA	Not Applicable
NEDA	National Economic and Development Authority
NGA	Non-Government Agency
NGCP	National Grid Corporation of the Philippines
NGOs	Non-Governmental Organizations
NGU	National Government Unit
NHA	National Housing Authority
NHMFC	National Home Mortgage Finance Corporation
NHS	National High School
NHTS	National Household Targeting System
NIA	National Irrigation Administration
NIPAS	National Integrated Protected Areas System
No.	Number
NPC	National Power Corporation
NSO	National Statistics Office
OIC	Officer in Charge
OFWs	Overseas Filipino Workers
PAG-IBIG	<i>Pagtutulungan sa Kinabukasan: Ikaw, Bangko, Industria at Gobyerno</i>
PAGASA	Philippine Atmospheric, Geophysical, and Astronomical Services Administration
PAR	Philippine Area of Responsibility
Pcs.	Pieces
PD/P.D.	Presidential Decree
PEIS	PHILVOCS Earthquake Intensity Scale
PENRO	Provincial Environment and Natural Resources Office
PESO	Public Employment Service Office





# Comprehensive Land Use Plan, Mina, Iloilo 2016-2025



PGU	Provincial Government Unit
Phil.	Philippine
PHIVOLCS	Philippine Institute of Volcanology and Seismology
PhP	Philippine Peso
PNP	Philippine National Police
Pop./Pop'n.	Population
PPO	Provincial Police Office
PPP	Public and Private Partnerships
PRC	Philippine Red Cross
PRECIS	Providing Regional Climate for Impact Studies
Priv	Private
PS	Personal Services
PS	Primary School
PSB	Personnel Selection Board
PTA	Parents Teachers Association
Pub	Public
PWD	Person with Disability
RA	Republic Act
RA	Risk Assessment
RCP	Reinforced Concrete Pipe
RHU	Rural Health Unit
ROW	Right of Way
RPTAS	Real Property Tax Assessment System
SB	<i>Sangguniang Bayan</i>
Sec.	Secretary
SEC	Securities and Exchange Commission
SHFC	Social Housing Finance Corporation
SKMF	<i>Sangguniang Kabataan</i> Municipal Federation
SME	Small and Medium Enterprises
sq.m.	square meters(s)
Sr.	Senior



# Comprehensive Land Use Plan, Mina, Iloilo 2016-2025



SSS	Social Security System
St.	Street
Sta.	<i>Santa</i> (female saint)
SWM	Solid Waste Management
SWMP	Solid Waste Management Plan
SY	School Year
T&B	Toilet & Bath
Tech	Technical
temp.	temperature
TESDA	Technical Education and Skills Development Authority
TWG	Technical Working Group
UK	United Kingdom
USB	Universal Serial Bus
Voc	Vocational
vs.	versus
w/o	without
y.o.	years old
yrs.	years



# DEMOGRAPHY



## I. DEMOGRAPHY

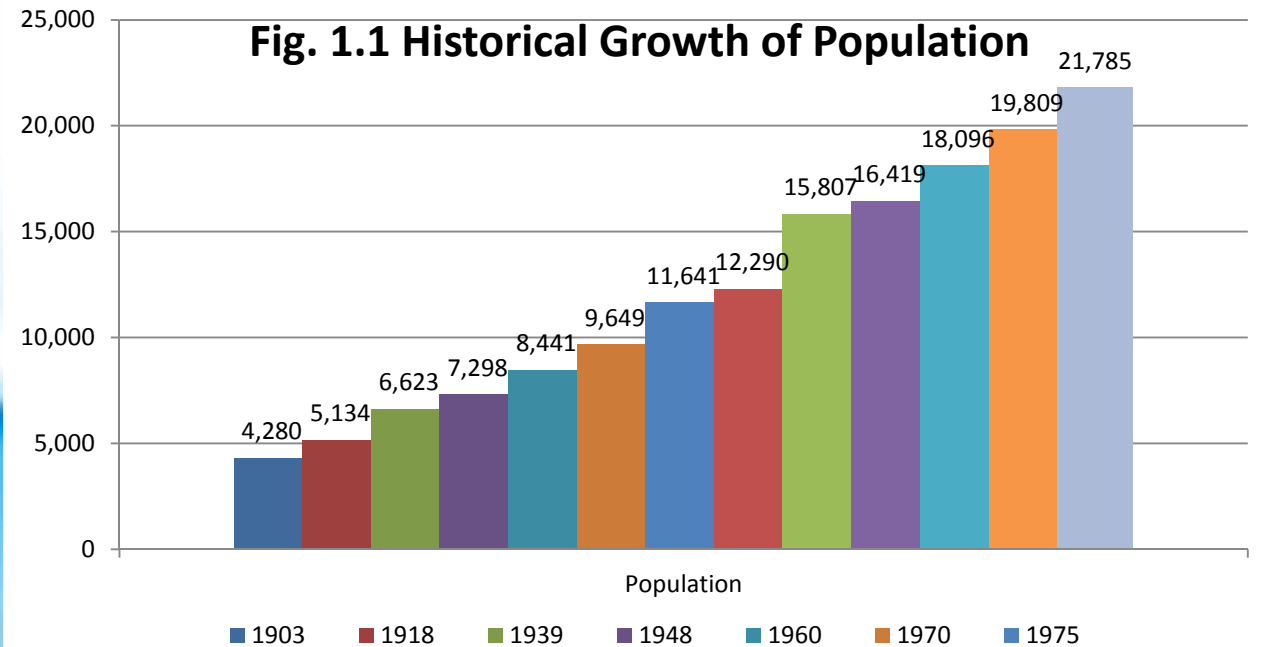
### 1.1 POPULATION LEVELS AND GROWTH PATTERN

As of 2010, Mina has a population of 21,785. Its average annual growth rate in 2007-2010 is 3.22%, which is fast, compared to its sluggish growth rate of less than 2% in the last 10 years. Table 1.1 shows that Mina has a population of 4,280 in 1903. This rose to 5,134 in 1918; 6,623 in 1939; 7,298 in 1948; 8,441 in 1960; 9,649 in 1970; 11,641 in 1975; 12,290 in 1980; 15,807 in 1990; 16,419 in 1995; 18,096 in 2000; 19,809 in 2007 and 21,785 in 2010. It is observed that the annual growth rate (AGR) is consistently increasing every census year ranging from 0.76% as the lowest to 3.82% as the highest. The highest AGR as shown in this table are within the 1970 and 1975 census years while the lowest AGR occurred are within the 1990 and 1995. This indicates that the increase or decrease on AGR is the result of the in or out-migration of some of the population from and to other towns as shown in the graph in Figure 1.

**Table 1.1. Historical Growth of Population, Mina, Iloilo**

Year	Population	Increase or Decrease	Average Annual Growth Rate
1903	4,280		
1918	5,134	854	1.22
1939	6,623	1,498	1.22
1948	7,298	675	1.08
1960	8,441	1,143	1.22
1970	9,649	1,208	1.35
1975	11,641	1,992	3.82
1980	12,290	649	1.09
1990	15,807	3,517	2.55
1995	16,419	612	0.76
2000	18,096	1,677	1.96
2007	19,809	1,713	1.30
2010	21,785	1,976	3.22

Source: NSO, 2010





**1.2 POPULATION COMPOSITION**

- **Population by School Age, Working Age, Dependent Age**

The Table 1.2 demonstrates the composition of the population of the municipality. It reflects that the municipality has the total of 15,880 potential labor force consisting individuals aging 15 years old and over. It is also showed in the table that there is a total of 8,214 individuals comprise the dependent population of the municipality. The 6770 persons belong to the young dependents and 1444 were the old dependents. It also shows that 8.55 % of the population is pre-schoolers, 11.82% are elementary, 11.97 are secondary and 7.73% are in tertiary.

**Table 1.2. Population Composition by School-Age, Working-Age, Dependent Age Group and Sex, Year 2010**

<b>Age Group</b>	<b>All Ages</b>	<b>Percentage</b>
<b>Total Population</b>	<b>21,785</b>	<b>-</b>
<b>School going Population</b>		
Pre-School (3-6)	1862	8.55
Elementary (7-12)	2576	11.82
Secondary (13-18)	2608	11.97
Tertiary (19-22)	1685	7.73
<b>Working-Age</b>		
Labor Force (15 and over)	15,880	72.89
<b>Dependent Population</b>		
Young (0-14)	6770	31.08
Old (65-over)	1444	6.63

Source: NSO, 2010



# Comprehensive Land Use Plan, Mina, Iloilo 2016-2025



## 1.3 POPULATION DISTRIBUTION

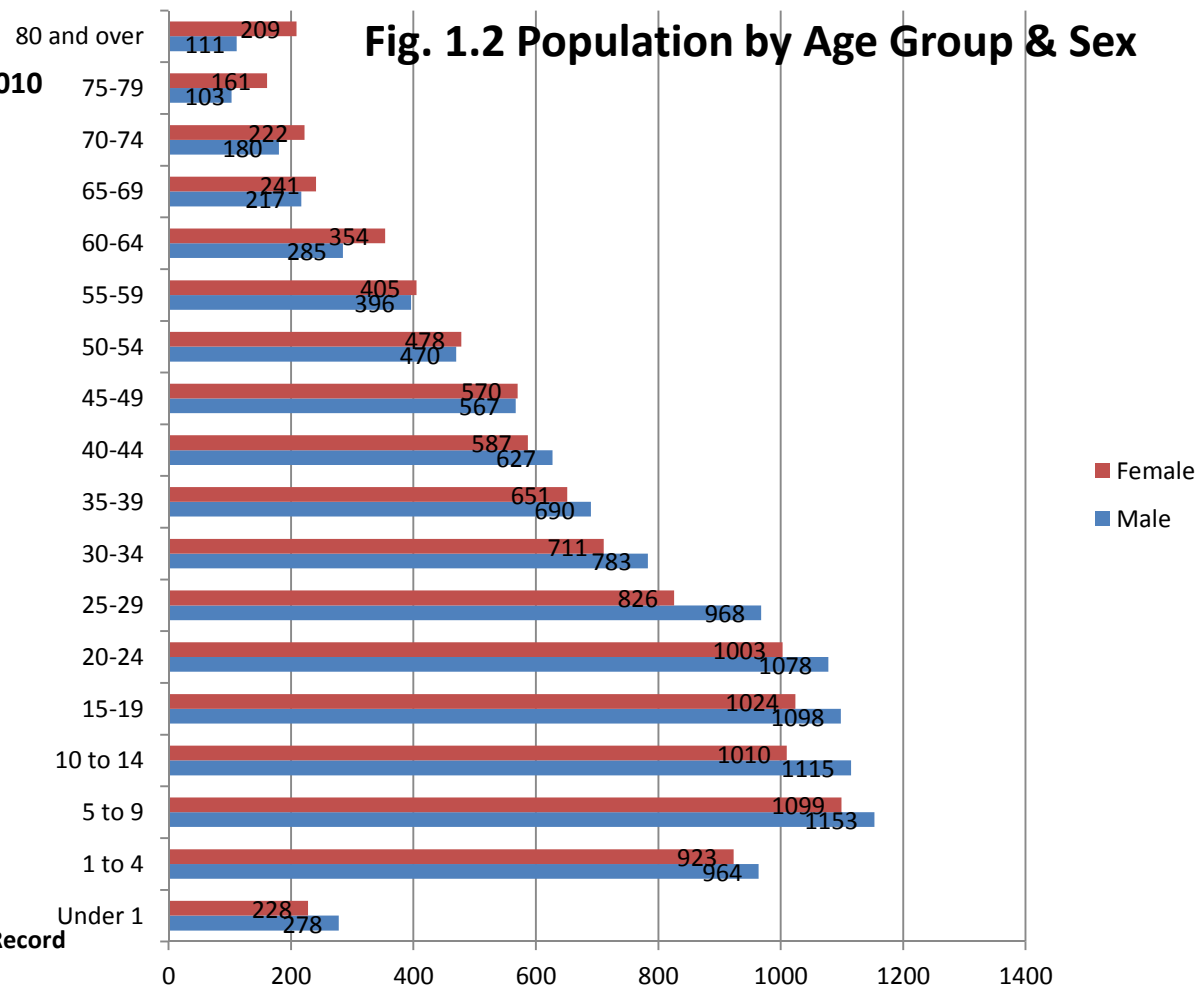
### - Population by Age Group and Sex

The table below shows that in 2010 Census of Population and Housing, population aging 5-9 years old has the greatest contribution which comprises 10.34 % of the total population. This was followed by 10-14 years – 9.75% and 15-19 years – 9.74 % and those aging from 75-79 years got the lowest percentage of 1.21%.

**Table 1.3. Population Distribution by Age Group and Sex, Year 2010**

Age Group	Censal Year 2010		
	Male	Female	Total
Under 1	278	228	506
1-4	964	923	1887
5-9	1153	1099	2252
10-14	1115	1010	2125
15-19	1098	1024	2122
20-24	1078	1003	2081
25-29	968	826	1794
30-34	783	711	1494
35-39	690	651	1341
40-44	627	587	1214
45-49	567	570	1137
50-54	470	478	948
55-59	396	405	801
60-64	285	354	639
65-69	217	241	458
70-74	180	222	402
75-79	103	161	264
80 and over	111	209	320
<b>Total</b>	<b>11083</b>	<b>10702</b>	<b>21785</b>

Source: Philippine Statistics Authority/ National Statistics Office/ Municipal Record





# Comprehensive Land Use Plan, Mina, Iloilo 2016-2025



## - Urbanization Level

Mina is considered a rural municipality in which out of the 22 barangays, 20 are rural barangays and only 2 are urban barangays. The table below shows that in 1980, 12.74% of the 12,290 municipality's populations were residing in the urban barangays. This rose to 13.58% in 1990; 13.58% in 2000 and 12.38 % in 2007. The decrease in 2007 urbanization level maybe attributed to the out-migration of urban population to rural barangays. And in 2010, it gradually increased to 12.62%.

**Table 1.4. Urbanization Levels of Mina for the Past 40 Years**

Year	Barangay Population			Urbanization Level (%)
	Urban	Rural	Total	
<b>1970</b>	1,218	8,431	9,649	12.62
<b>1975</b>	1,469	10,172	11,641	12.62
<b>1980</b>	1,566	10,724	12,290	12.74
<b>1990</b>	2,147	13,661	15,808	13.58
<b>1995</b>	2,229	14,190	16,419	13.58
<b>2000</b>	2,516	15,580	18,096	13.90
<b>2007</b>	2,453	17,356	19,809	12.38
<b>2010</b>	2,750	19,035	21,785	12.62

Source: NSO

## - Population Density

Referring to Table 1.5, Mina has a gross density of 5.02 or 5 population/ hectare as of 2010. The same table also shows that urban barangays- Mina East and Mina West, has the highest population density of 45.74 or 46 population/hectare and 13.54 or 14 population/hectare respectively. While in the rural barangays, Singay has the highest population density having 10.44 or 10 population/ hectare and the lowest population density was in Nasirum having 2.74 or 3 Population/hectare only. This indicates that Singay is the most densely populated barangay in the rural areas while Nasirum is sparsely populated in terms of gross population per barangay.



# Comprehensive Land Use Plan, Mina, Iloilo 2016-2025



**Table 1.5. Population Density, Mina, Iloilo**

Barangay	Municipality		
	Area (Ha.)	Population, 2010	Population Density (persons per hectare)
<b>Urban</b>			
1.Mina East	100.5942	1,362	13.54
2.Mina West	30.3433	1,388	45.74
<b>Urban Density</b>	<b>130.9375</b>	<b>2,750</b>	<b>21.00</b>
<b>Rural</b>			
1.Abat	200.6268	799	3.98
2.Agmanaphao	422.9784	1,412	3.34
3.Amiroy	506.4051	1,621	3.20
4.Badiangan	539.2654	1,764	3.27
5.Bangac	128.4701	1,295	10.08
6.Cabalabaguan	225.2673	1,883	8.36
7.Capul-an	163.0339	591	3.63
8.Dala	146.6137	988	6.74
9. Guinbuangan	33.6079	277	8.24
10.Janipa-an East	289.3227	1,207	4.17
11.Janipaan-West	268.8109	775	2.88
12.Nasirum	100.5722	276	2.74
13.Naumuan	124.3696	393	3.16
14.Singay	59.7538	624	10.44
15.Talibong Grande	134.8868	603	4.47
16.Talibong Pequeño	145.2741	475	3.27
17.Tipolo	104.1961	625	6.00
18.Tolarucan	291.1995	1,707	5.86
19.Tumay	147.0541	1,046	7.11
20.Yugot	177.3541	674	3.80
<b>Rural Density</b>	<b>4,209.0625</b>	<b>19,035</b>	<b>4.52</b>
<b>Total Population Density</b>	<b>4,340</b>	<b>21,785</b>	<b>5.02</b>

Source: NSO,2010





## 1.4 POPULATION CHANGE

### - Overseas Workers

Table 1.6 shows that the number of Overseas Filipino Workers (OFW) is increasing every year. In 2011, there were a total of 771 people who are working abroad and are increasing annually. Thus in year 2015, it rose to 1112 OFWs. This is an indication that many people from the municipality preferred to work abroad for better job opportunities and better earnings than remain in the locality where job opportunities were few.

**Table 1.6. Overseas Workers for the Past Five Years**

Year	No. of Overseas Workers			Increase/Decrease in No.			Increase/Decrease in Percent (%)		
	Total	Male	Female	Total	Male	Female	Total	Male	Female
2011	771	318	453	-	-	-	-	-	-
2012	857	360	498	87	42	45	11.28	13.21	9.93
2013	949	408	541	91	48	43	10.62	13.33	8.64
2014	1046	463	584	98	55	43	10.33	13.48	7.95
2015	1112	486	626	108	66	42	10.33	14.26	7.19

Source: NSO

### - Projected Population and Households

The Table 1.7 shows the projected population and households of the municipality for 2016 up to 2025. The population projection of the municipality is around 24,350 in 2016; 24,806 in 2017; 25,271 in 2018; 25,744 in 2019 and so on as it reaches 28,775 in 2025. The projected number of households of the municipality is 5,092 in 2016; 5,187 in 2017; 5,284 in 2018 up to 6,015 in 2025. The household projection was computed using the 1.87 annual growth rate of the municipality from 2000 up to 2010 censal years.

**Table 1.7. Projected Population and Households, Year 2016-2025**

Year	Population	Households
Base Year 2010	21,785	4557
2016	24,350	5092
2017	24,806	5187
2018	25,271	5284
2019	25,744	5383
2020	26,226	5484
2021	26,717	5587
2022	27,217	5691
2023	27,727	5797
2024	28,246	5905
2025	28,775	6015

Source: NSO



# Comprehensive Land Use Plan, Mina, Iloilo 2016-2025



## - Household Population and Average Household Size

The municipality has 22 barangays with two (2) classified as urban barangays and 20 as rural barangays. Based on the 2010 census, 12.62% of the population resides in the urban area having 555 households in an area which comprises the 4.95 average household sizes as shown in Table 1.8. The remaining 87.38% of the population with a total of 4002 households resides in the rural area having 4.76 average household sizes. Out of the 22 barangays, Talibong Grande has the highest average household size of 5.20 and Tumay with the average household size of 4.45 has the least size is reflected in the same table.

**Table 1.8. Household Population By Urban and Rural Barangay and Average Household size, Year 2010**

Barangay	Population	Number of Household	Average Household Size
<b>Urban</b>			
Mina East	1362	266	5.12
Mina West	1388	289	4.80
<b>Total Urban Population</b>	<b>2,750</b>	<b>555</b>	<b>4.95</b>
<b>Rural</b>			
Abat	799	176	4.54

Agmanaphao	1412	297	4.75
Amiroy	1621	336	4.82
Badiangan	1764	369	4.78
Bangac	1295	253	5.12
Cabalabaguan	1883	417	4.52
Capul-an	591	124	4.77
Dala	988	214	4.62
Guibuangan	277	62	4.47
Janipa-an East	1207	243	4.97
Janipa-an West	775	157	4.94
Nasirum	276	59	4.68
Naumuan	393	85	4.62
Singay	624	126	4.95
Talibong Grande	603	116	5.20
Talibong Pequeño	475	95	5.00
Tipolo	625	127	4.92
Tolarucan	1707	365	4.68
Tumay	1046	235	4.45
Yugot	674	146	4.62
<b>Total Rural Population</b>	<b>19,035</b>	<b>4002</b>	<b>4.76</b>
<b>Total Municipality</b>	<b>21,785</b>	<b>4557</b>	<b>4.78</b>

Source: NSO

## - Projected Population by Barangay

Table 1.9 shows the projected population of the barangays that comprise the municipality for the next 10 years (2016 up to 2025). In the table it was projected that the municipality will have a population of 28,775 in 2025. The urban area will be having a population of 3,632 and 25,143 in the rural area in 2025. The projection was computed based on the computation on the HLURB Guidebook volume 2 having the 2010 as the base year.



# Comprehensive Land Use Plan, Mina, Iloilo 2016-2025



**Table 1.9. Population Projection by Barangay, Year 2016-2025**

Barangay	2010	Participation Rate (PR)	Population									
			2016	2017	2018	2019	2020	2021	2022	2023	2024	2025
<b>TOTAL</b>	<b>21,785</b>	<b>1.00</b>	24350	24806	25271	25744	26226	26717	27217	27727	28246	28775
<b>Urban</b>												
Mina East	1362	0.063	1522	1551	1580	1610	1640	1670	1702	1734	1767	1799
Mina West	1388	0.064	1551	1580	1610	1640	1671	1702	1734	1767	1800	1833
<b>Sub-Total</b>	<b>2,750</b>	<b>0.127</b>	<b>3073</b>	<b>3131</b>	<b>3190</b>	<b>3250</b>	<b>3311</b>	<b>3372</b>	<b>3436</b>	<b>3501</b>	<b>3567</b>	<b>3632</b>
<b>Rural</b>												
Abat	799	0.037	893	910	927	944	962	980	998	1017	1036	1055
Agmanaphao	1412	0.065	1578	1608	1638	1669	1700	1732	1764	1797	1831	1865
Amiroy	1621	0.074	1812	1846	1880	1916	1951	1988	2025	2063	2102	2141
Badiangan	1764	0.081	1972	2009	2046	2085	2124	2163	2204	2245	2287	2330
Bangac	1295	0.059	1447	1475	1502	1530	1559	1588	1618	1648	1679	1711
Cabalabaguan	1883	0.086	2105	2144	2184	2225	2267	2309	2353	2397	2441	2487
Capul-an	591	0.027	661	673	686	698	711	725	738	752	766	781
Dala	988	0.045	1104	1125	1146	1168	1189	1212	1234	1257	1281	1305
Guibungan	277	0.013	310	315	321	327	333	340	346	353	359	366
Janipa-an East	1207	0.055	1349	1374	1400	1426	1453	1480	1508	1536	1565	1594
Janipa-an West	775	0.036	866	882	899	916	933	950	968	986	1005	1024
Nasirum	276	0.013	308	314	320	326	332	338	345	351	358	365
Naumuan	393	0.018	439	448	456	464	473	482	491	500	510	519
Singay	624	0.029	697	711	724	737	751	765	780	794	809	824
Talibong Grande	603	0.028	674	687	699	713	726	740	753	767	782	796
Talibong Pequeño	475	0.022	531	541	551	561	572	583	593	605	616	627
Tipolo	625	0.029	699	712	725	739	752	767	781	795	810	826
Tolarucan	1707	0.078	1908	1944	1980	2017	2055	2093	2133	2173	2213	2255
Tumay	1046	0.048	1169	1191	1213	1236	1259	1283	1307	1331	1356	1382
Yugot	674	0.031	753	767	782	796	811	827	842	858	874	890
<b>Sub-Total</b>	<b>19,035</b>	<b>0.873</b>	<b>21277</b>	<b>21675</b>	<b>22081</b>	<b>22494</b>	<b>22915</b>	<b>23345</b>	<b>23781</b>	<b>24226</b>	<b>24679</b>	<b>25143</b>

Source: MPDO



# Comprehensive Land Use Plan, Mina, Iloilo 2016-2025



## - Projected School-Age, Labor Force and Dependent Population

The Table 1.10 illustrates the projected School-age, Labor Force and Dependent population of the municipality wherein it was computed using the participation rate and the projected population of the municipality. The data from the 2010 census was used as the baseline. The table reflects that municipality will have a labor force of 20,977 and 10,848 young and old dependents by 2025. It shows that as the population increases the dependency rate also increases annually.

**Table 1.10. Projected School-Age Population, Labor Force and Dependent Population**

Grouping	Base Year 2010	Participation Rate	2016	2017	2018	2019	2020	2021	2022	2023	2024	2025
<b>Population</b>	<b>21,785</b>	1.00	24350	24806	25271	25744	26226	26717	27217	27727	28246	28775
<b>School-going Population</b>												
Pre-School	1862	0.085	2070	2109	2148	2188	2229	2271	2313	2357	2401	2446
Elementary	2576	0.118	2873	2927	2982	3038	3095	3153	3212	3272	3333	3395
Secondary	2608	0.120	2922	2977	3033	3089	3147	3206	3266	3327	3390	3453
Tertiary	1685	0.077	1875	1910	1946	1982	2019	2057	2096	2135	2175	2216
<b>Labor Force</b>	<b>15,880</b>	0.729	17751	18084	18423	18767	19119	19477	19841	20213	20591	20977
<b>Dependent</b>												
Young (0-14)	<b>6770</b>	0.311	7573	7715	7859	8006	8156	8309	8464	8623	8785	8949
Old (65 and over)	<b>1444</b>	0.066	1607	1637	1668	1699	1731	1763	1796	1830	1864	1899

Source: MPDO

## - Projected Population by Age Group

The Table 1.11 reflects the current and projected population of the municipality in terms of age and sex. Considering 2010 as the base year when the municipality had a population of 21,785, it is projected to increase to 28,775 in the year 2025.



# Comprehensive Land Use Plan, Mina, Iloilo 2016-2025



**Table 1.11. Projected Total Population by Age Group**

Age Group	Base Year 2010	PR	2016	2017	2018	2019	2020	2021	2022	2023	2024	2025
<b>All Ages</b>	21,785	1.00	24,350	24,806	25,271	25,744	26,226	26,717	27,217	27,727	28,246	28,775
<b>Under 1</b>	506	0.0232	566	576	587	598	609	621	632	644	656	668
<b>1-4</b>	1,887	0.0866	2109	2149	2189	2230	2272	2314	2358	2402	2447	2492
<b>5-9</b>	2,252	0.1034	2517	2564	2612	2661	2711	2762	2814	2866	2920	2975
<b>10-14</b>	2,125	0.0975	2375	2420	2465	2511	2558	2606	2655	2705	2755	2807
<b>15-19</b>	2,122	0.0974	2372	2416	2462	2508	2555	2602	2651	2701	2751	2803
<b>20-24</b>	2,081	0.0955	2326	2370	2414	2459	2505	2552	2600	2649	2698	2749
<b>25-29</b>	1,794	0.0824	2005	2043	2081	2120	2160	2200	2241	2283	2326	2370
<b>30-34</b>	1,494	0.0686	1670	1701	1733	1766	1799	1832	1867	1901	1937	1973
<b>35-39</b>	1,341	0.0616	1499	1527	1556	1585	1614	1645	1675	1707	1739	1771
<b>40-44</b>	1,214	0.0557	1357	1382	1408	1435	1461	1489	1517	1545	1574	1604
<b>45-49</b>	1,137	0.0522	1271	1295	1319	1344	1369	1394	1421	1447	1474	1502
<b>50-54</b>	948	0.0435	1060	1079	1100	1120	1141	1163	1184	1207	1229	1252
<b>55-59</b>	801	0.0368	895	912	929	947	964	982	1001	1019	1039	1058
<b>60-64</b>	639	0.0293	714	728	741	755	769	784	798	813	829	844
<b>65-69</b>	458	0.0210	512	522	531	541	551	562	572	583	594	605
<b>70-74</b>	402	0.0185	449	458	466	475	484	493	502	512	521	531
<b>75-79</b>	264	0.0121	295	301	306	312	318	324	330	336	342	349
<b>80 &amp; over</b>	320	0.0147	358	364	371	378	385	392	400	407	415	423

Source:MPDO

## 1.5 OTHER POPULATION DESCRIPTIONS

### - Population by Educational Attainment

Table 1.12 indicates the highest educational attainment of the population 5 years old and over. The table shows that the total number of population aging 5 years old and over is 19,392 individuals. It also shows that 2.57 % of the population has no grade completed at all. The 20.69% of the population had reached elementary but failed to graduate. The total of 2115 or 10.91 % of the population had finished their elementary. The 14.55% or 2821 individuals reached high school but failed to finish and 19.01 % of the population had graduated high school. Out the total population 11.51% are degree holders and 30 individuals pursue post baccalaureate studies.



# Comprehensive Land Use Plan, Mina, Iloilo 2016-2025



**Table 1.12. Household Population 5 Years Old and Over by Highest Educational Attainment, Year 2010**

Highest Educational Attainment	Population	Percentage (%)
<b>Total Population 5 years old and over</b>	<b>19,392</b>	<b>-</b>
<b>No Grade Completed</b>	498	2.57
<b>Pre-School</b>	713	3.68
<b>Elementary</b>		
1 <sup>st</sup> -4 <sup>th</sup> Grade	3029	15.62
5 <sup>th</sup> – 6 <sup>th</sup> Grade	984	5.07
Graduate	2115	10.91
<b>High School</b>		
Undergraduate	2821	14.55
Graduate	3686	19.01
<b>Post Secondary</b>		
Graduate	1514	7.81
Undergraduate	79	0.004
<b>College</b>		
1 <sup>st</sup> Year College	639	3.30
2 <sup>nd</sup> Year College	618	3.19
3 <sup>rd</sup> Year College	375	1.93
4 <sup>th</sup> Year College	30	0.002
5 <sup>th</sup> Year College	2	0.0001
<b>Academic Degree Holder</b>	2232	11.51
<b>Post Baccalaureate</b>	30	0.002
<b>Not Stated</b>	27	0.001

Source: NSO, 2010

### - Population by Mother Tongue

The Hiligaynon Ilonggo dialect is spoken by 99.14% of the population of the municipality based on the 2010 Census of Population and Housing. Some speak other dialects like Cebuano, Tagalog, Ilocano and Bicol as shown in Table 1.13. A sprinkling of other dialects like Ati, Badjao, Masbateño, Capizeño and others may be heard spoken by few. This shows that immigration is one aspect of our population growth.



**Table 1.13. Population by Mother Tongue, Year 2010**

Mother Tongue	Population	% of Total Population
<b>Hiligaynon Ilonggo</b>	<b>21,597</b>	<b>99.14</b>
Cebuano	42	0.19
Tagalog	35	0.160
Ilocano	16	0.073
Bikol/ Bicol	14	0.064
Ati	9	0.040
Badjao	8	0.037
Masbateño / Masbatenon	8	0.037
Capizeño	7	0.032
Waray	7	0.032
Akeanon	6	0.027
Ibatan	5	0.023
Other Foreign Ethnicity	5	0.023
Aromanen –Manobo	3	0.014

Hanunuo	3	0.014
Karay-a	3	0.014
Boholano	2	0.009
Gubatnon	2	0.009
Ibaloi /Ibaloy	2	0.009
Ifugao	2	0.009
American / English	2	0.009
Agta-Cimaron	1	0.005
Bisaya/ Binisaya	1	0.005
Davao-Chavacano	1	0.005
Maranao	1	0.005
Palawan/ Palawan-o	1	0.005
Romblomanon	1	0.005
Tau-buid	1	0.005
<b>TOTAL</b>	<b>21,785</b>	<b>100.00</b>

Source: NSO, 2010

**- Population by Religious Affiliation**

Roman Catholicism is the dominant religion being practiced by 97.74% or 21,293 people of the municipality based on the 2010 census of Population and Housing. Other religions or sects also exist in the municipality but very minimal in number. To mention, they are Bible Baptist (0.519%), Iglesia ni Kristo(0.491%), Evangelicals (0.362%), Seventh Day Adventist(0.193%), Church of Christ(0.184%), Jehovah’s Witnesses (0.147%) and others as shown in Table 1.14.



**Table 1.14. Population by Religious Affiliation, Year 2010**

Religious Affiliation	No. of People	% of Total Population
Roman Catholic including Catholic Charismatic	21,293	97.74
Bible Baptist Church	113	0.519
Iglesia ni Cristo	107	0.491
Evangelicals (Philippine Council of Evangelical Churches)	79	0.362
Seventh Day Adventist	42	0.193
Church of Christ	40	0.184
Jehovah's Witnesses	32	0.147
Other Religious Affiliations	20	0.092
Aglipay	13	0.060
Jesus is Lord Church	13	0.060
Assoc. of Fundamental Baptist Churches in the Philippines	12	0.055
Islam	6	0.027
Bread of Life Ministries	5	0.023
Buddhist	5	0.023
Tribal Religions	2	0.009
Iglesias a Dios Espiritu Santo Incorporated	1	0.005
Philippine Grace Gospel	1	0.005
Other Protestants	1	0.005
<b>TOTAL</b>	<b>21,785</b>	<b>100.00</b>

Source: NSO, 2010

**- Population by Marital Status in Age group**

Year 2010 census of population and housing indicates that majority of the youth still enjoy being single and prefer 25-29 years old as an ideal marrying age. Out of 21,785 population, 58.28 % or 12697 persons enjoys being single in spite of their age. There are still number of people who engaged in common law/live in status due to lack of money to be used for marriage. And still there are few who have status which was unknown. See Table 1.15.





## Comprehensive Land Use Plan, Mina, Iloilo 2016-2025



Table 1.15. Marital Status by Age Group

Age Group	Household Population 10 Years Old and Over	Single	Married	Widowed	Divorced/ Separated	Common – Law/ Live-in	Unknown
<b>Total</b>	<b>21785</b>	<b>12697</b>	<b>7767</b>	<b>959</b>	<b>103</b>	<b>244</b>	<b>15</b>
<b>Below 20</b>	<b>8892</b>	<b>8806</b>	<b>51</b>	<b>-</b>	<b>2</b>	<b>25</b>	<b>8</b>
<b>20-24</b>	<b>2081</b>	<b>1566</b>	<b>442</b>	<b>2</b>	<b>6</b>	<b>64</b>	<b>1</b>
<b>25-29</b>	<b>1794</b>	<b>903</b>	<b>826</b>	<b>3</b>	<b>9</b>	<b>53</b>	<b>-</b>
<b>30-34</b>	<b>1494</b>	<b>457</b>	<b>990</b>	<b>11</b>	<b>10</b>	<b>26</b>	<b>-</b>
<b>35-39</b>	<b>1341</b>	<b>259</b>	<b>1027</b>	<b>16</b>	<b>11</b>	<b>28</b>	<b>-</b>
<b>40-44</b>	<b>1214</b>	<b>179</b>	<b>959</b>	<b>42</b>	<b>18</b>	<b>13</b>	<b>3</b>
<b>45-49</b>	<b>1137</b>	<b>149</b>	<b>906</b>	<b>50</b>	<b>13</b>	<b>18</b>	<b>1</b>
<b>50-54</b>	<b>948</b>	<b>100</b>	<b>730</b>	<b>98</b>	<b>15</b>	<b>4</b>	<b>1</b>
<b>55-59</b>	<b>801</b>	<b>73</b>	<b>617</b>	<b>96</b>	<b>11</b>	<b>4</b>	<b>-</b>
<b>60-64</b>	<b>639</b>	<b>76</b>	<b>461</b>	<b>92</b>	<b>6</b>	<b>3</b>	<b>1</b>
<b>65-69</b>	<b>458</b>	<b>37</b>	<b>297</b>	<b>121</b>	<b>-</b>	<b>3</b>	<b>-</b>
<b>70-74</b>	<b>402</b>	<b>41</b>	<b>235</b>	<b>123</b>	<b>1</b>	<b>2</b>	<b>-</b>
<b>75-79</b>	<b>264</b>	<b>21</b>	<b>130</b>	<b>111</b>	<b>1</b>	<b>1</b>	<b>-</b>
<b>80 and Over</b>	<b>320</b>	<b>30</b>	<b>96</b>	<b>194</b>	<b>-</b>	<b>-</b>	<b>-</b>

Source: NSO 2010 Census of Population and Housing



## 1.6 CORE HEALTH INDICATORS

### - Crude Birth and Death Rates

The Municipality of Mina has a Crude Birth Rate of 20 and Crude Death Rate of 4 in 2011 as reflected in the Table 1.16. The CBR increased to 44 or by 121.66%. CDR increased from 4 in 2011 to 7 in 2012, or an increase by 79.57%. The years after, the CBR decreased with the highest decrease in 2013 having 50.91% decreased from the previous year. The CDR increased by 45.50% in 2013 and decreased by 9.09% in 2014. It continued to decrease the following year.

**Table 1.16. Crude Birth Rate (CBR) and Crude Death Rate (CDR) for the Past Five Years (2011-2015)**

Period	CBR	%	
		Increase/Decrease from Previous Year	Increase/Decrease from Previous Year
2011	20		4
2012	44	121.66%	7
2013	22	-50.91%	11
2014	14	-37.04%	10
2015	12	-10.88%	7

Source: Municipal Health Office

### - Literacy Rate

A person is considered literate if he/she is able to read and write a simple message in any language or dialect. As shown in 2010 census of population and housing, the municipality has the literacy rate of 98.95% or 16140 persons of the population out of 17,140 persons aging 10 years old and over. Only 1.05 % or a total of 180 people were illiterate as shown in Table 1.17. The table also shows that the male and female has that closest literacy level having 98.94% literacy level for male and 98.96% for the female. And the literacy rate has the ratio of 94:1.

**Table 1.17. Literacy Rate of Population 5 Years Old and Over, by Sex, Year 2010**

	Male		Female		Both Sexes	
	No.	%	No.	%	No.	%
<b>Total Population</b>	11083	50.87%	10702	49.13%	21785	100%
<b>Population 5 Years Old and Over</b>	8688	78.39	8452	78.98	17140	78.68
<b>Literate</b>	8596	98.94	8364	98.96	16960	98.95
<b>Illiterate</b>	92	1.06	88	1.04	180	1.05

Source: NSO, Census 2010



**- Labor Force by Sex and Employment Status**

The municipality of Mina has a potential labor force of 15,880 persons which comprises the 69.90% of the total population of the municipality as shown in Table 1.18. It includes the population aging 15 years old and over. Out of these, 11,101 are in the labor force wherein 6,844 are males and 4,257 are females. The Table also reflects that a total of 7,944 or 50.02% of the labor force were employed and the remaining 3,157 were unemployed. The total of 4,779 both male and female or 30.10% of the potential labor force population were not in the labor force.

**Table 1.18. Labor Force Population by Sex and Employment Status, Year 2011**

	Population 15 Years and Over	Labor Force Participation	Labor Force				Not in the Labor Force	
			Employed	%	Unemployed	%	No.	%
Male	7955	43.10	5052	31.81	1792	11.29	1111	7.00
Female	7925	26.80	2892	18.21	1365	8.59	3668	23.10
<b>Total</b>	<b>15880</b>	<b>69.90</b>	<b>7944</b>	<b>50.02</b>	<b>3157</b>	<b>19.88</b>	<b>4779</b>	<b>30.10</b>

Source: BSPO



# PHYSICAL ENVIRONMENT



## II. PHYSICAL ENVIRONMENT

### 2.1 TERRESTRIAL ENVIRONMENT

#### - Topography

Situated at the center of Iloilo Province, the Municipality of Mina is dominated by vast expanses of flatlands, with some hilly portions estimated to be 10 to 20 feet above sea level in the areas of Abat, Capulan, Janipa-an West, Nasirum, Naumuan, Tipolo, and Yugot.

Specifically, three slope classes or categories define Mina's land surface. The land area distribution and location of these are presented in Table 2.1 and Map 2.1.

Level to nearly level lands, with slope ranging from 0% to 3%, comprise the greatest portion (71.63%) of Mina's total land area of 4,340 hectares. These are followed by very gently sloping to undulating lands, with slope ranging from 3% to 8%, that cover 23.31% (1,012 hectares). Lands of such types have very low erosion potential and are highly suitable for urban and residential development and lowland rice production.

Moderately sloping to rolling lands, with slope ranging from 8% to 18%, account for the remaining 2.34% (102 hectares). Concentrated at the northern border, these lands are appropriate for seasonal and permanent crop production.

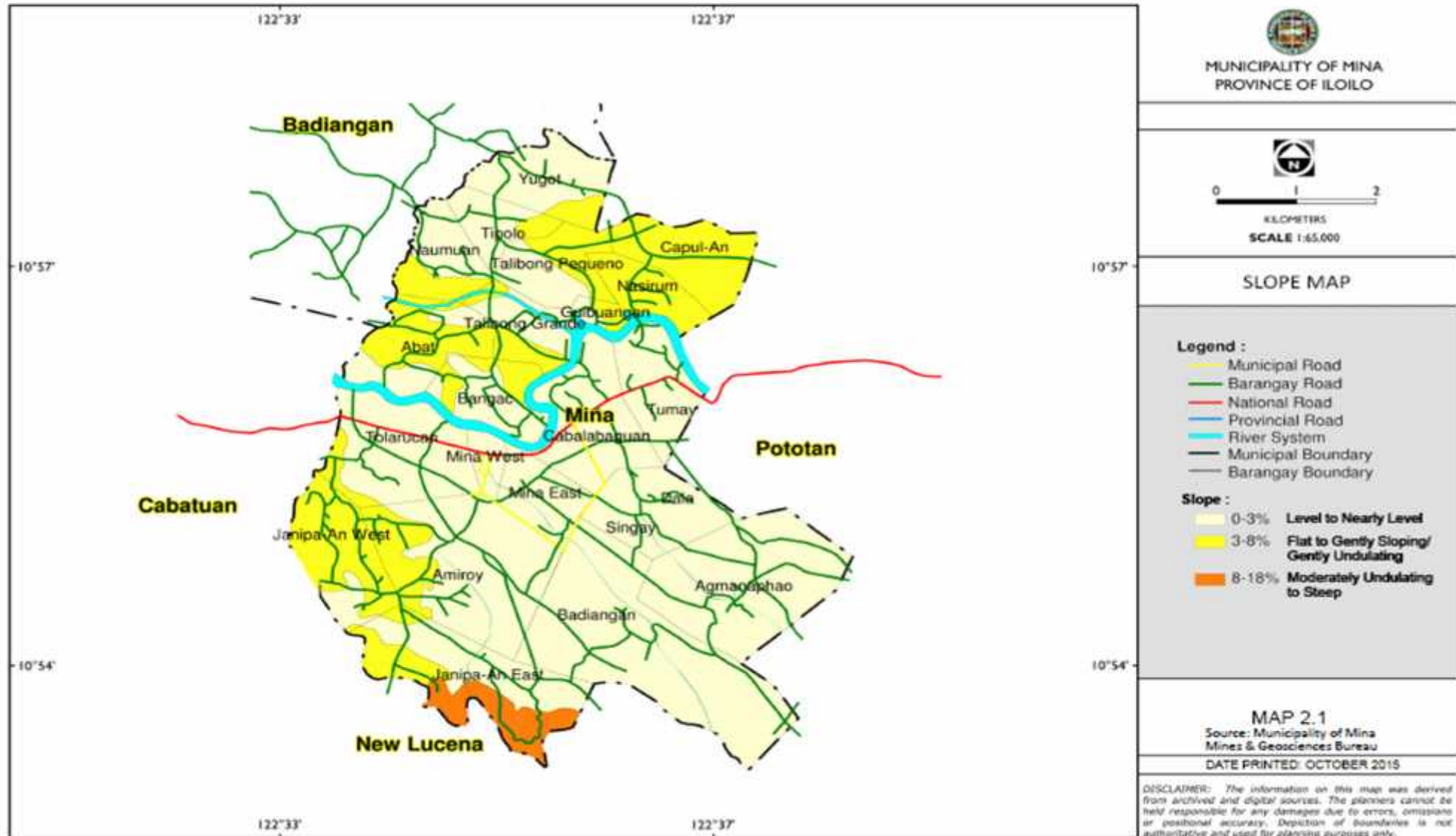
**Table 2.1. Land Area Distribution of Different Slope Classes in Mina, Iloilo**

Slope Category	Land Area (ha)	Percent of Total Land Area
0-3%	3,108.75	71.63
3-8%	1,011.74	23.31
8-18%	101.59	2.34
Water Body	117.92	2.72
<b>Total</b>	<b>4,340.00</b>	<b>100.00</b>

Source: Mina Municipal Planning and Development Office



# Comprehensive Land Use Plan, Mina, Iloilo 2016-2025





# Comprehensive Land Use Plan, Mina, Iloilo 2016-2025



## - Soils

Four types of soil are formed in the Municipality of Mina. These are the Sta. Rita Clay, the Alimodian Clay Loam, the Umingan Sandy Loam and the Alimodian Silt.

**Table 2.2. Land Area Distribution of Different Soil Types in Mina, Iloilo**

Soil Type	Land Area (ha)	Percent of Total Land Area
Sta. Rita Clay	3,130.90	72.14
Alimodian Clay Loam	1,002.42	23.10
Umingan Fine Sandy Loam	160.19	3.69
Alimodian Silt	46.47	1.07
<b>Total</b>	<b>4,340.00</b>	<b>100.00</b>

Source: Mina Municipal Planning and Development Office

As presented in Table 2.2 and Map 2.2, covering the greatest portion of Mina is the Sta. Rita Clay, a poorly drained flat lowland soil developed from recent alluvial deposits and characterized by a low soil profile development. It can be found in the barangays of Agmanaphao, Amiroy, Badiangan, Cabalabaguan, Dala, Guibuangan, Janipa-an East, *Poblacion*, Singay, Talibong Grande, Tipolo, Tolarucan, Tumay, and Yugot.

The second most prevalent soil type in the municipality is the Alimodian Clay Loam, which is present in Abat, Bangac, Capul-an, Janipa-an West, Naumuan, Nasirum, and portions of Janipa-an East.

Least common of the four is the Alimodian Silt, which is sited only in the southern portion of Janipa-an East.

## - Surface Run-Off

The most notable water body that traverses the plains of Mina is the Suague River that comes from the west of the municipality. Irrigation channels are integrated in the river. The canals are constructed and maintained by the National Irrigation Administration (NIA) in order to cater to the municipality's rice-producing barangays. All in all, the open water spaces in Mina cover approximately 33.07 hectares or 0.76% of the total land area.

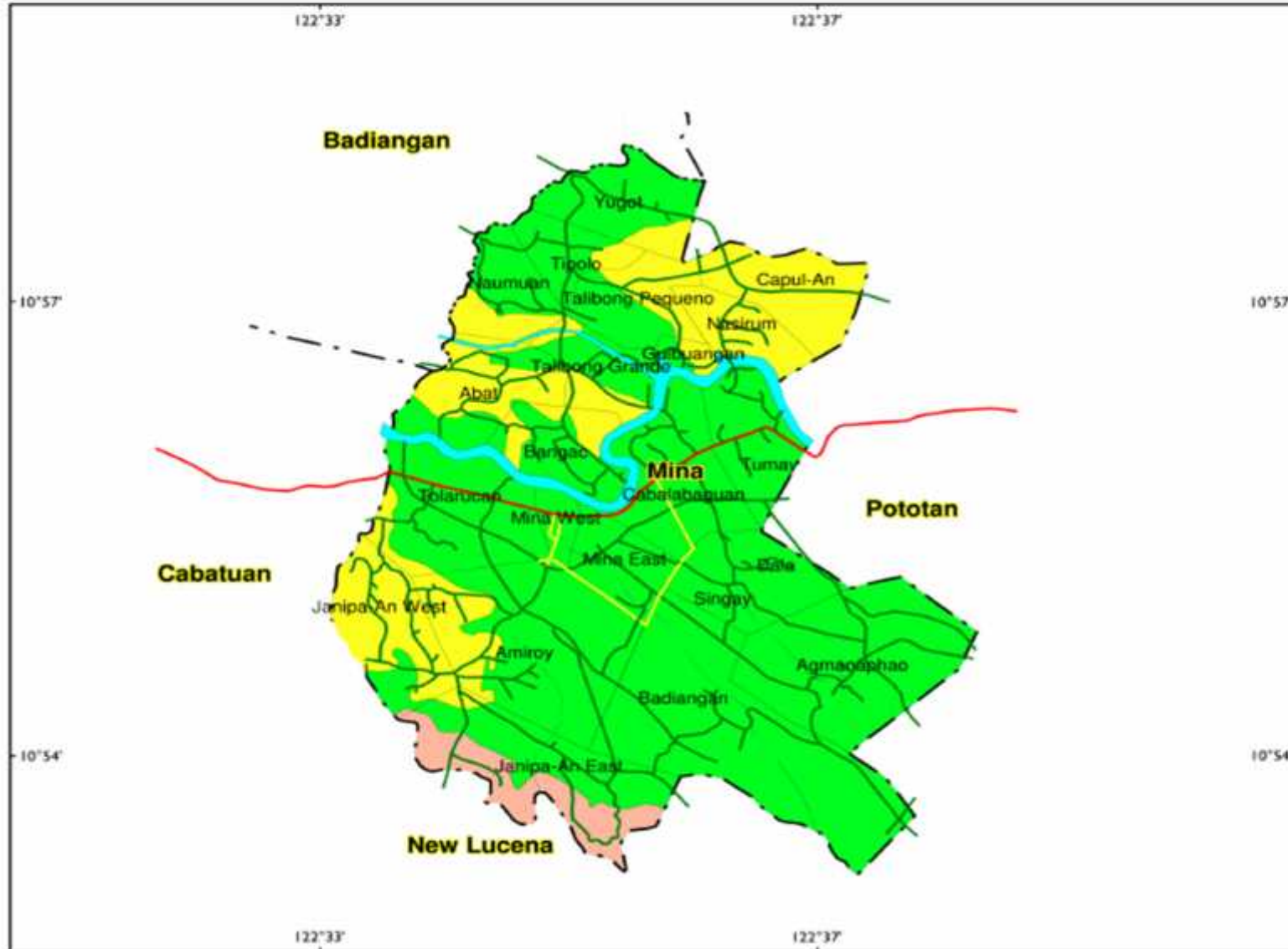
## - Forests

Areas with slope greater than 18% (rolling to very steep) are classified as forestlands regardless of forest cover. Forestlands are further categorized into: 1) production forests, which are rolling to moderately steep lands with slope of 18% to 30%; and 2) protection forests, which are moderately steep to very steep lands with slope of more than 30%.

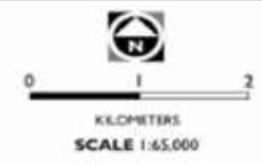
Based on the slope data presented earlier, the Municipality of Mina does not have areas that can be categorized as forestlands.



# Comprehensive Land Use Plan, Mina, Iloilo 2016-2025



MUNICIPALITY OF MINA  
PROVINCE OF ILOILO



SOIL MAP

- Legend :**
- Municipal Road
  - Barangay Road
  - National Road
  - Provincial Road
  - River System
  - Municipal Boundary
  - Barangay Boundary
  - Alimodian Clay Loam
  - Alimodian Silt
  - Sta. Rita Clay

MAP 2.2  
Source: Municipality of Mina  
Mines & Geosciences Bureau  
DATE PRINTED: OCTOBER 2015

DISCLAIMER: The information on this map was derived from archived and digital sources. The planners cannot be held responsible for any damages due to errors, omissions or positional accuracy. Depiction of boundaries is not authoritative and used for planning purposes only.





## 2.2 WATER ENVIRONMENT

### - Freshwater Resources

The primary freshwater resource in Mina is the Suague River, which primarily provides irrigation to the agricultural lands in the municipality. Some residents occasionally catch freshwater fish from the river for their own consumption. Suague River will be soon connected to the Jalaur Multi-Purpose Project.

## 2.3 ATMOSPHERE AND CLIMATE

Based on the Modified Corona Climate Classification, two types of climate occur in the Province of Iloilo. The southern portion of the province, where Mina belongs, has Type I climate with two distinct seasons: dry from November to April, and wet during the rest of the year.

Based on the Köppen Climate Classification System, Mina is classified to have sub-category Am (tropical monsoon) climate, characterized by a very pronounced wet season.

### - Prevailing Winds

The prevailing winds in the area are affected by the following wind flows: northeast monsoon (*Hanging Amihan*) from November to February; southwest monsoon (*Hanging Habagat*) from June to September; and trade winds in between monsoon seasons. The northeast monsoon brings cooler air, while the southwest monsoon brings heavy rains.

The annual prevailing wind direction in the Philippines is northeast, with annual speed rated at two (2) meters per second.

### - Temperature

The average annual temperature in Mina is 27.1°C. The warmest month of the year is May with an average temperature of 28.4°C. In January, the average temperature is 25.8°C, the lowest average temperature of the whole year. The average temperatures vary during the year by 2.6°C.

### - Rainfall

The average annual rainfall is 2,072mm. The driest month is February with 55mm. Most precipitation falls in July, with an average of 290mm. The difference in precipitation between the driest month and the wettest month is 235mm.